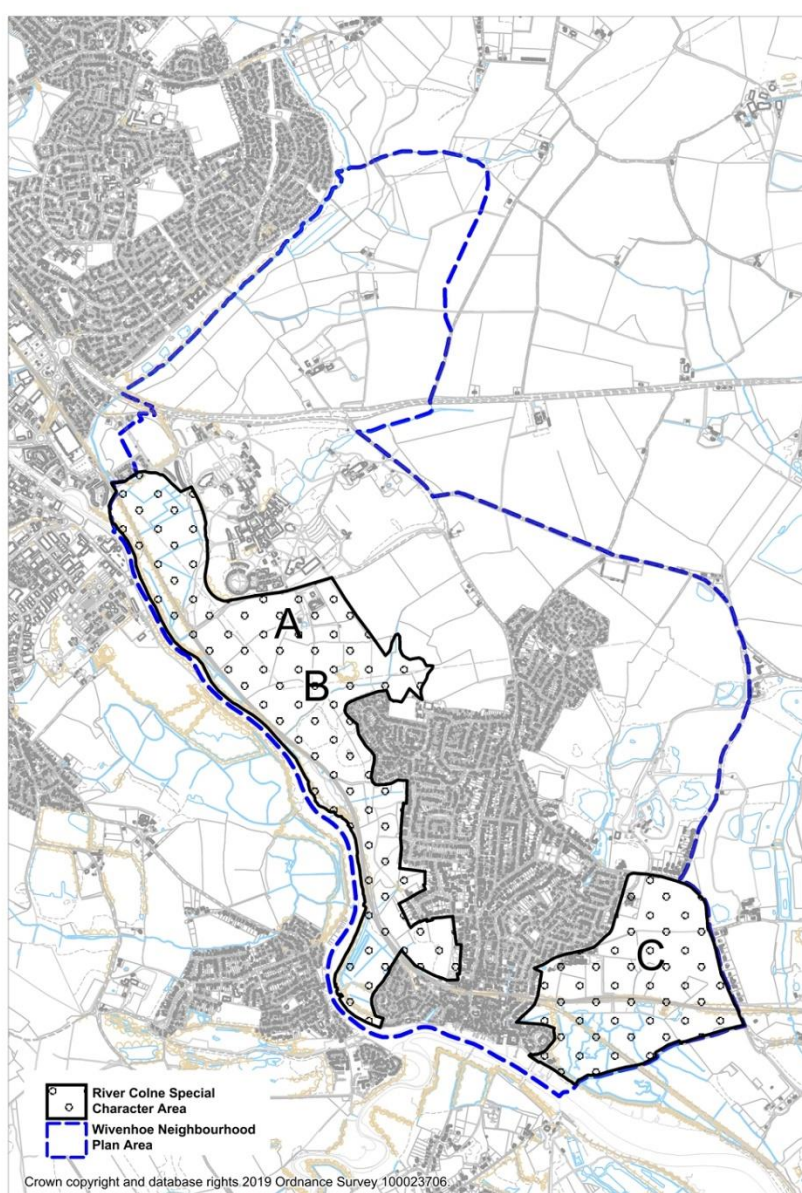


## Hearings submission statement ENV2, The Wivenhoe Society

In its response to the 2017 Consultation the Wivenhoe Society opposed the removal from the Coastal Protection Belt of a large area of land to the east of Wivenhoe, adjacent to the Colne Estuary.

Since that Consultation the Wivenhoe Neighbourhood Plan [WNP] has been examined, overwhelmingly approved in a Local Referendum and adopted by CBC.

To protect the views and vistas towards and from the river the WNP contains a policy, WIV 5, protecting the Setting of the River. This designates an area as the River Colne Special Character Area. See figure 14 of the WNP which can be viewed here:



<https://cbccrmdata.blob.core.windows.net/noteattachment/Wivenhoe%20Neighbourhood%20Plan.pdf>

The wording of the policy is:

***Protecting the Setting of the River***

*Countryside that contributes vistas of high value towards the River Colne and its estuary, or that can be clearly viewed from the river or land on the Rowhedge and Fingringhoe side of the river and which is shown on Figure 14 and the Proposals Map as the River Colne Special Character Area should be protected from development which significantly detracts from these vistas or views. Any development proposal should satisfy the following conditions: (I) Demonstrate a need to be located in the River Colne Special Character Area; and (II) Be safe from flooding and not have an unacceptable impact on the estuarine coast; and (III) Not significantly impact on the landscape character, on important nature conservation, or on maritime uses; and (iv) Have economic and social benefits important to the well-being of the estuarine coast; and (v) Take into account the effects of climate change; and (vi) Must not hinder any proposed coastal path.*

Paragraphs 9.11 to 9.16 of the WNP discuss the area and contain photographs to illustrate the views and rural nature of the designated area.

Our Recommendation:

We suggest that the Borough revises its Coastal Protection Belt as shown on its proposals maps to include all of the River Colne Special Character Area as shown in the proposals map for the adopted Wivenhoe Neighbourhood Plan. This would accord with the text in paragraph 13.18 of the Draft Local Plan which states: *The Colchester Coastal Protection Belt aims to protect the rural and undeveloped coastline in the Borough from inappropriate development that would adversely affect its rural, undeveloped and open character.*

The Wivenhoe Society  
March 2021